



<b>Project number</b>	2014-1-AT01-KA201-000908
<b>Title of the project</b>	Mathematical Duel Plus 2015-17



# BÍLOVEC

# Basic information

- **population:** 7,600
- **density:** 195/km<sup>2</sup>
- **region:** Moravian-Silesian
- **mayor:** Pavel Mrva (ex-headmaster of GMK Bílovec)



symbol of Bílovec



aerial view



the Silesian square

# History

- the first written mention about Bílovec comes from the year 1324, when Bílovec was owned by lords of Kravaře
- until 1918, Bílovec was a part of the Austria-Hungarian Empire
- in 1938 it was occupied by the Nazi army
- after the end of World War II, the German speaking population was expelled and replaced by Czech settlers.



# Wagstadt (Bílavec in Sudetenland)

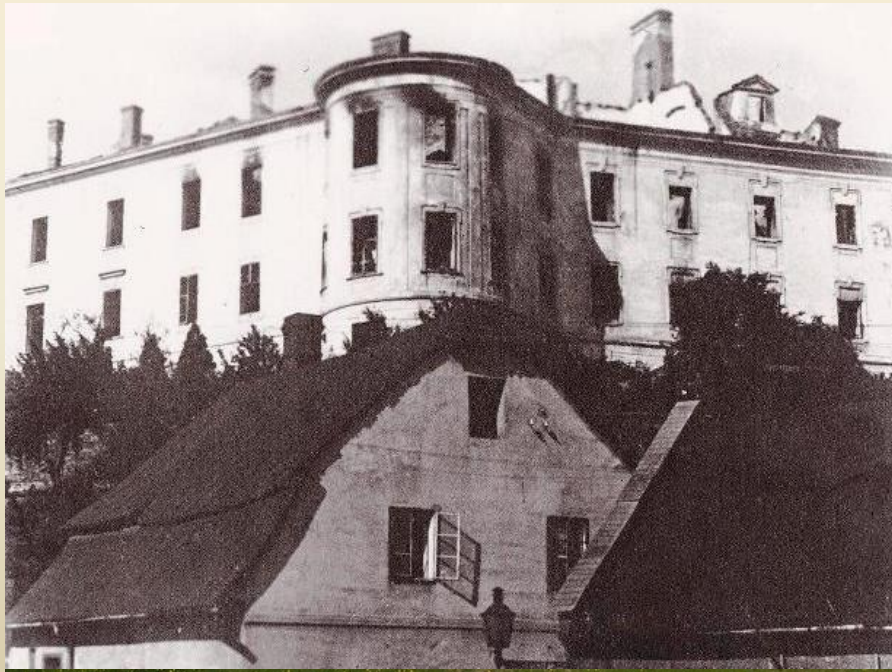




# Places of Interest

# Bílovec Castle

- Renaissance architecture
- art exhibitions, concerts, theater and fencing performances take place here nowadays



# Chessboard on the square

- chessboard with dimensions 8x8m is the largest stone chessboard in the Czech Republic



# St. Nicholas Church



(a view from the tower)



# The town museum

(from 18th century)

- you can see there a history of Bílovec, castle and some textile products



# St. Barbara Chapel





There are three elementary schools, one grammar school and one art school in Bílovec.



GMK



The image features a black background with two spotlights at the top, one on the left and one on the right. Both spotlights cast a bright blue beam of light downwards, creating a large, glowing blue area in the center of the frame. The text "Famous people born in Bílovec" is centered within this blue area. At the bottom of the blue area, there is a horizontal, glowing blue oval shape, suggesting a stage floor or a spotlight effect.

Famous people born in  
Bílovec

**PETRA KVITOVÁ**  
**ROSTISLAV OLESZ**

- professional tennis player
- a hockey player (New Jersey Devils)
- Wimbledon winner in 2011 and 2014



**EMIL PŘIKRYL**

- an architect
- professor of architectural design at art academy in Prague






In spite of the fact that Bílovec is a small town, something is always going on here: theater and music performances, celebrations, sport tournaments...



Maybe Bílovec is not the largest,



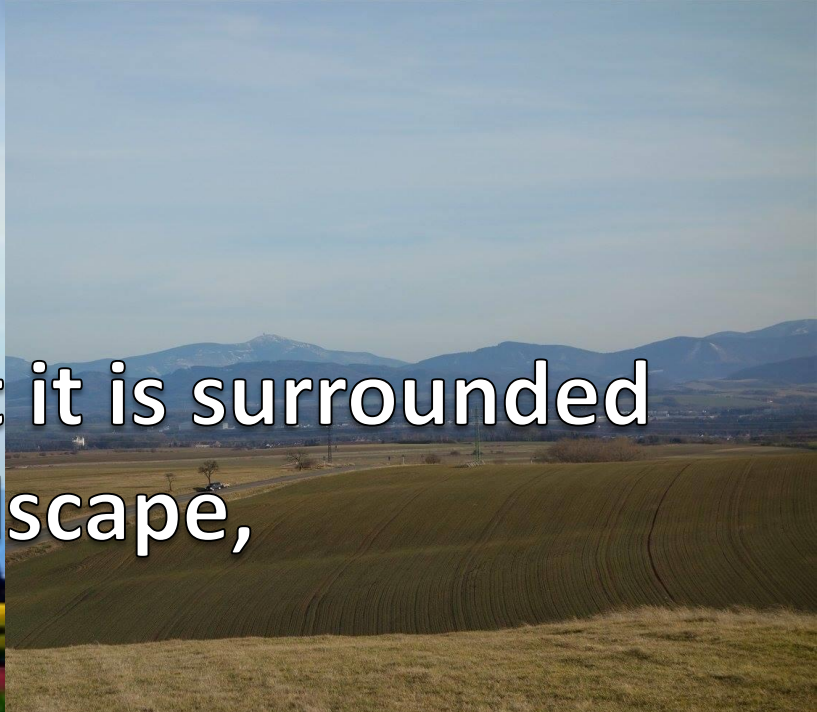
the most famous



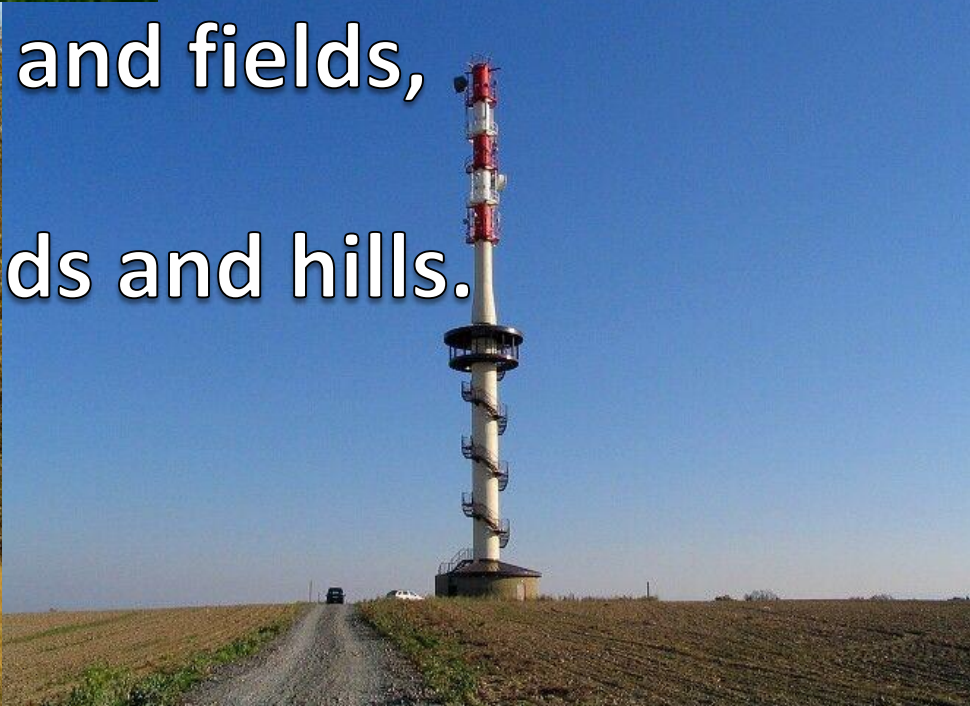
or crowded by tourists.



But just because of that it is surrounded  
by a nice landscape,



meadows and fields,  
forests, ponds and hills.





And there is a beautiful view from some places.



# Resources

- <http://cs.wikipedia.org/wiki/B%C3%ADlovec>
- <http://www.bilovec.cz/>

**CREATED BY**

Bára Tížková

Jiří Nábělek

Damian Wałoszek

Tomáš Kůřil

Bílovec 2015

**GMK**  
GYMNÁZIUM  
MIKULÁŠE KOPERNÍKA  
BÍLOVEC